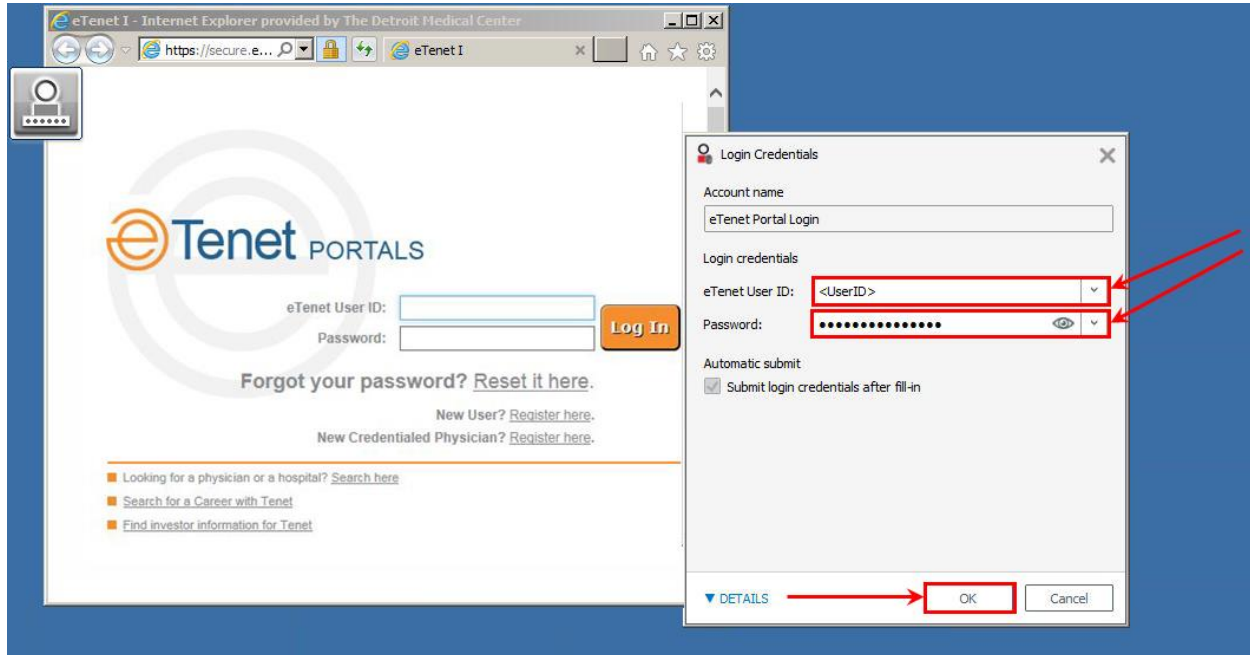


Enrolling in a Single Sign-On (SSO) Managed Application

Document Date: 10/5/2018

Enrolling your User Name and password for SSO

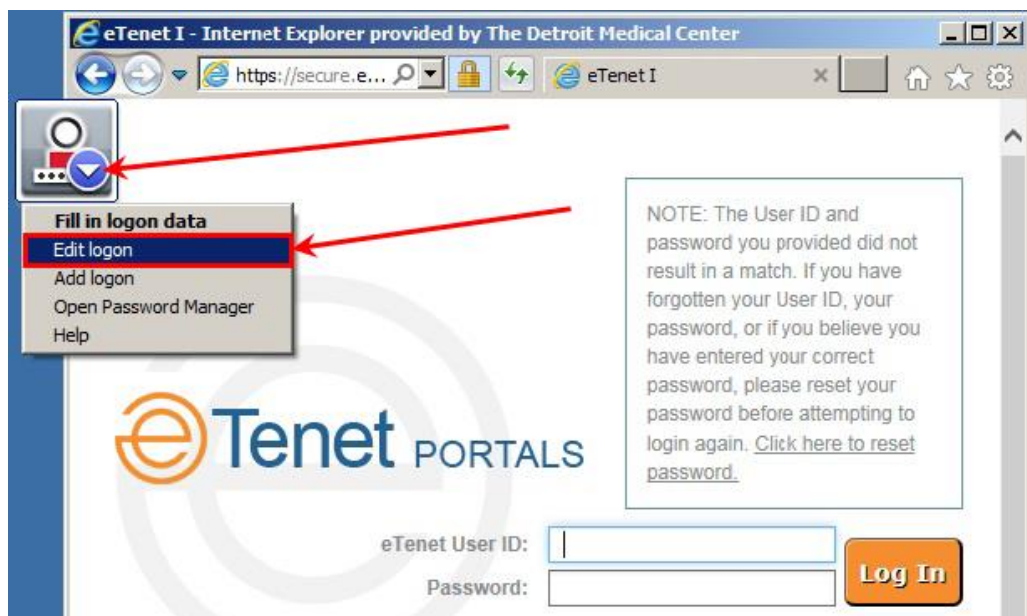
1. Launch the application that has been configured for SSO (**eTenet Portal** is used in this example).
2. When prompted, enter your **eTenet User ID** and **Password** in the fields provided on the **Login Credentials** screen and then click **OK**.



3. You will now be logged into the **eTenet Portal** with the credentials provided each time the portal is launched.

Updating or changing your SSO password

4. When your password changes for the SSO managed application (**eTenet Portal** is used in this example), you will need to update the password stored for SSO.
5. After an invalid logon attempt, Click the **down arrow** on the **DigitalPersona** icon in the upper left corner of the logon window, and choose **Edit logon** from the menu.



Enrolling in a Single Sign-On (SSO) Managed Application

Document Date: 10/5/2018

- Update your password in the **Password:** field provided on the **Logon Credentials** screen and then click **OK**.

